



Acme Sanitary Ware Co. Ltd.

1/F, Acme Building, 22-28 Nanking Street, Kowloon, Hong Kong

Tel: 2388 7171 Fax: 2710 8012

Email: acme@acmesanitary.com.hk

Website: www.acmesanitary.com.hk

Since 1949

PROJECT		REF		REV	ITEM CODE	
LOCATION		DATE			PAGE	

SANITARY WARE SPECIFICATION SHEET

Item Descriptions	Sloan (USA) "Basys" Solar powered , infrared, sensor activated, electronic, chrome plated die cast body, hand washing faucet for pre-tempered or hot and cold water operation, 0.5gpm/ 9Lpm Mult-Lam Spray, DC supply	Illustration/ Drawing
Model	EFX-275.000.0000	  
Finish	Chrome Plated	
Manufacturer	Sloan (USA Brand)	
Supplier	Acme Sanitary Ware Co. Ltd Mr. Eric Wong/ Mr. Don Yuen	
Contact Tel/Fax	(852) 2388-7171 / (852) 2710-8012	
E-mail	acme@acmesanitary.com.hk	
Website	www.acmesanitary.com.hk	
Specifications	<p>Solar Powered, Sensor Activated, Electronic, Chrome Plated Die Cast Body, Hand Washing Faucet with the following features:</p> <ul style="list-style-type: none"> • All serviceable components above deck • One tool service • All wetted components to be stainless steel, engineered thermoplastic, EPDM, and copper or copper alloy • Solenoid housed in removable carrier that includes supply strainer • Integral water supply shut off • Supply strainer serviceable from above deck • Vandal resistant spray insert, key housed inside faucet body • All electronics sealed to IP-67 • Gold plated electrical contacts • Above deck individual diagnostic indicators for battery life, solenoid condition, and power up mode • Flexible, high pressure supply hoses, 3/8" compression connections • Bi-stable magnetic solenoid • Four (4) "AA" alkaline batteries • Double infrared sensors with automatic setting feature • Single hole installation • Includes all mounting hardware • Line purge mode, eliminates stagnant water • Adjustable time-outs • High temperature auto shut-off (LCD models - order separately) • Faucet can be configured to add LCD display • LCD display of water temperature and scrub time (LCD models - order separately) • Solar power harvesting options • Mechanical mixing, integral to spout, optional 	    <p>This product may contribute to LEED credits. See details on LEED calculation worksheet.</p> <p>The product shall be tested and certified to industry standards: ASME A112.18.1M, CSA B125.1, California Health and Safety Code 116875 (AB1953-2006), and Vermont Bill S.152. This product meets ADA ANSI/ICC A117.1 requirements.</p>

* All information of the above is for reference only. No prior notice is made if any changes.



Since 1949

Acme Sanitary Ware Co. Ltd.

1/F, Acme Building, 22-28 Nanking Street, Kowloon, Hong Kong

Tel: 2388 7171 Fax: 2710 8012

Email: acme@acmesanitary.com.hk

Website: www.acmesanitary.com.hk

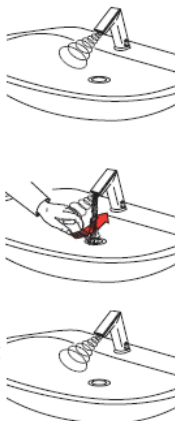
PROJECT		REF		REV	ITEM CODE	
LOCATION		DATE			PAGE	

ELECTRICAL SPECIFICATION

- ▶ **Control Circuit**
6.75 VDC
- ▶ **Sensor Range**
Nominal:
4" - 5" (102 mm - 127 mm)
Faucet Adaptive Self-adjustment Range:
2" - 14" (51 mm - 356 mm) nominal
- ▶ **Battery Life**
3-years under worst case conditions of 8,000 cycles per month and high water pressure. Optional power harvesting may extend service life of batteries to equal the shelf life.
- ▶ **Power Supplies**
 - 6 VDC Solar Energy Module with 6 VDC Alkaline Battery Pack
- ▶ **Time Out Setting**
30 seconds — Maximum time faucet will run upon continuous detection

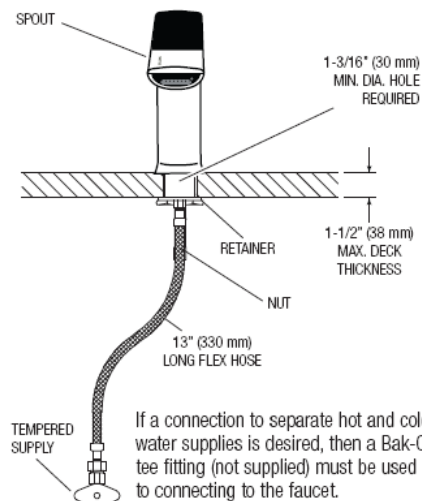
OPERATION

1. A continuous, invisible light beam is emitted from the sensor located at the front of the hand washing faucet.
2. As the user's hands enter the beam's effective range, the beam is reflected back into the sensor receiver and activates the solenoid valve allowing water to flow from the faucet. Water will flow until the hands are no longer sensed or until the faucet reaches its automatic time out limit setting.
3. When hands are moved away from the sensor, the loss of reflected light initiates an electrical signal that closes the solenoid valve shutting off the water flow. The circuit then automatically resets and is ready for the next user.



ROUGH-IN

Faucet with Single Line Water Supply



If a connection to separate hot and cold water supplies is desired, then a Bak-Chek® tee fitting (not supplied) must be used prior to connecting to the faucet.

PARTS

